

INSTRUCTIONS FOR INSTALLING A ELEVATOR ARM AND SHAFT REPLACEMENT KIT IN A NATIONAL VENDORS[®], CROWN SEVENTY TWO[®] GG-424 GRAND GOURMET FOOD MERCHANDISER

CHECK THE PARTS RECEIVED IN THE KIT WITH THE PARTS LIST IN THESE INSTRUCTIONS. FIGURE 1 SHOWS ALL THE PARTS IN THE KIT. IF ANY PARTS ARE MISSING, CONTACT NATIONAL VENDORS' PARTS DEPARTMENT IMMEDIATELY.

These instructions cover the procedure for installing a Elevator Arm and Shaft Replacement kit in a GG-424 Grand Gourmet Food Merchandiser.

Read these instructions carefully and thoroughly before installing the kit. Retain these instructions for part number and installation information.

Arm and Shaft Replacement Kit, part number 424-6162 contains the following parts:

Part Number	Description	Quantity
424-6160	Elevator Guide Shaft	1
424-6152	Left Arm and Roller Assembly	1
424-6155	Right Arm and Roller Assembly	1
424-6159	Left Elevator Sidewall	1
424-6157	Right Elevator Sidewall	1
404-7012	Shoulder Bushing	2
312-7034	Roll Pin	3
5201-266	Push-On Retainer	8
9900-046	No.8-32 x 1/4 RHS S/T Screw	4
424-6161	Installation Instructions	1
	* * *	

TO INSTALL THE KIT

NOTE

Installation of this kit requires almost complete disassembly of the Elevator Assembly. Be sure to retain all removed attaching parts. Four extra Screws, part number 9900-046, are included in the kit to replace any Screws lost during installation of the kit.

A. PARTS REMOVAL

1. With the Elevator Assembly removed from the Merchandiser, remove three attaching Thumbscrews and the Elevator Tray.
2. Remove the two Elevator Rollers from the Elevator Shaft. See Figure 2.
3. Using a 1/8" Pin Punch, remove the Roll Pin attaching the left Drive Gear to the Elevator Shaft. See Figure 2.

NOTE

When removing the Elevator Shaft and Gear Assembly as described in Step 4, a length of clear plastic tubing may come out with the Shaft. If so, be sure to reinstall the tubing when the Shaft and Gear Assembly is reinstalled.

4. Pull the Elevator Shaft and Gear Assembly out of the Elevator Assembly. See Figure 2.
5. Remove the two Shoulder Bushings from the Left and Right Elevator Sidewalls. See Figure 2.
6. Disconnect the Elevator Guide Arm Spring from the Spring Clip and the Right Elevator Guide Arm and remove from the Elevator Assembly. See Figure 2.

NOTE

Early production Elevator Assemblies are not equipped with the Elevator Stop Angles referred to in Step 7. In this case, simply remove the six Screws referred to in Step 7.

7. Remove six attaching Screws and the two Elevator Stop Angles from the Left and Right Elevator Sidewalls. See Figure 2.
8. Remove thirteen attaching Screws and the Bottom Panel and Selectors Assembly from the Elevator Assembly. See Figure 2.
9. Remove two attaching Screws and Nuts and the Shaft Support from the Elevator Base. See Figure 2.
10. Remove four attaching Screw and Nuts and the two Vertical Stops from the Left and Right Elevator Sidewalls. See Figure 2.
11. Remove eight Push-on Retainers and the Left and Right Product Sensor Covers from the Elevator Sidewalls. See Figure 2.
12. Remove two Screws attaching the Elevator Base to the Elevator Sidewalls and pull the Base free of the Arm and Shaft Assembly. See Figure 2.
13. Remove four attaching Screws and the Front Trim from the Elevator Sidewalls. See Figure 2.
14. Remove the Elevator Cover. See Figure 2.
15. Remove one attaching Screw and the Spring Clip from the Right Elevator Sidewall. See Figure 2.

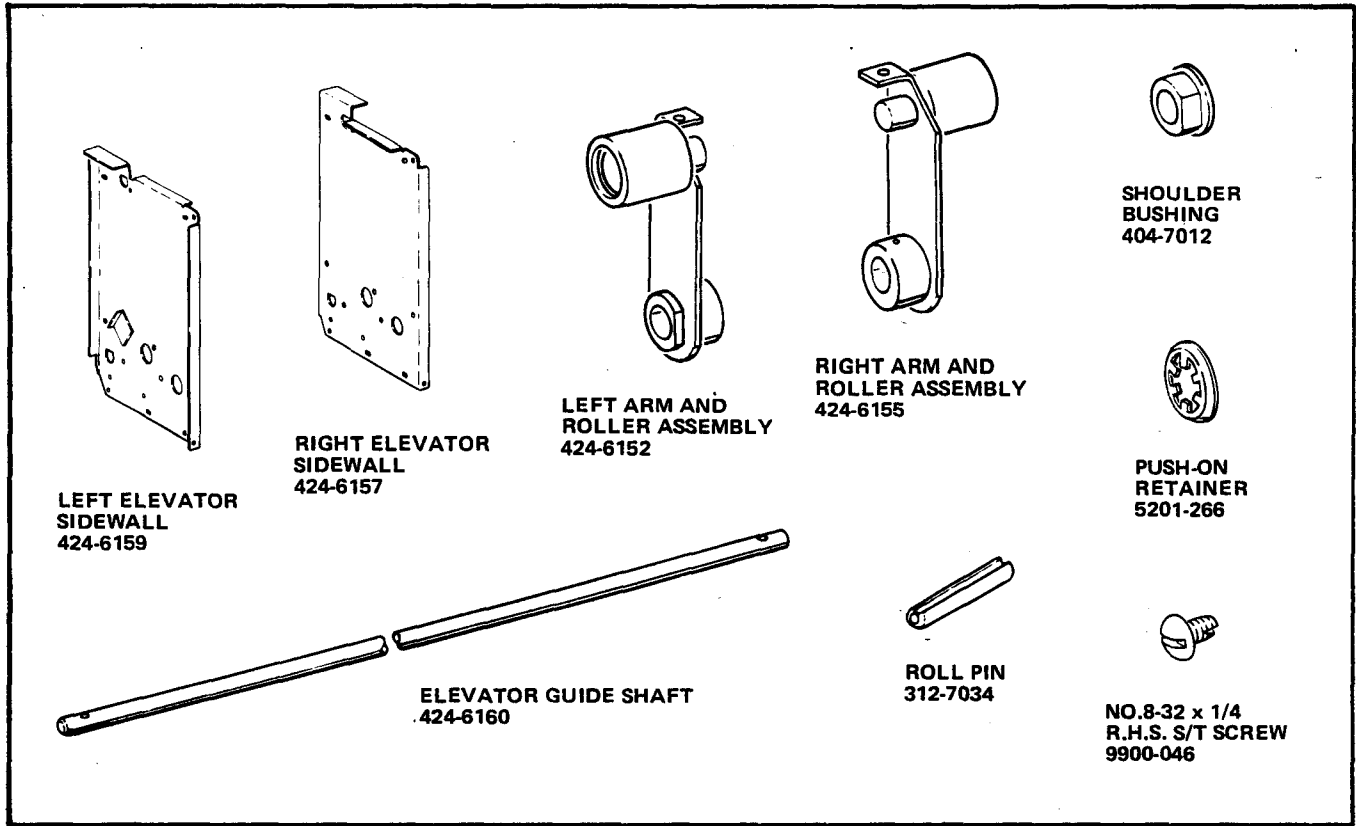


FIGURE 1

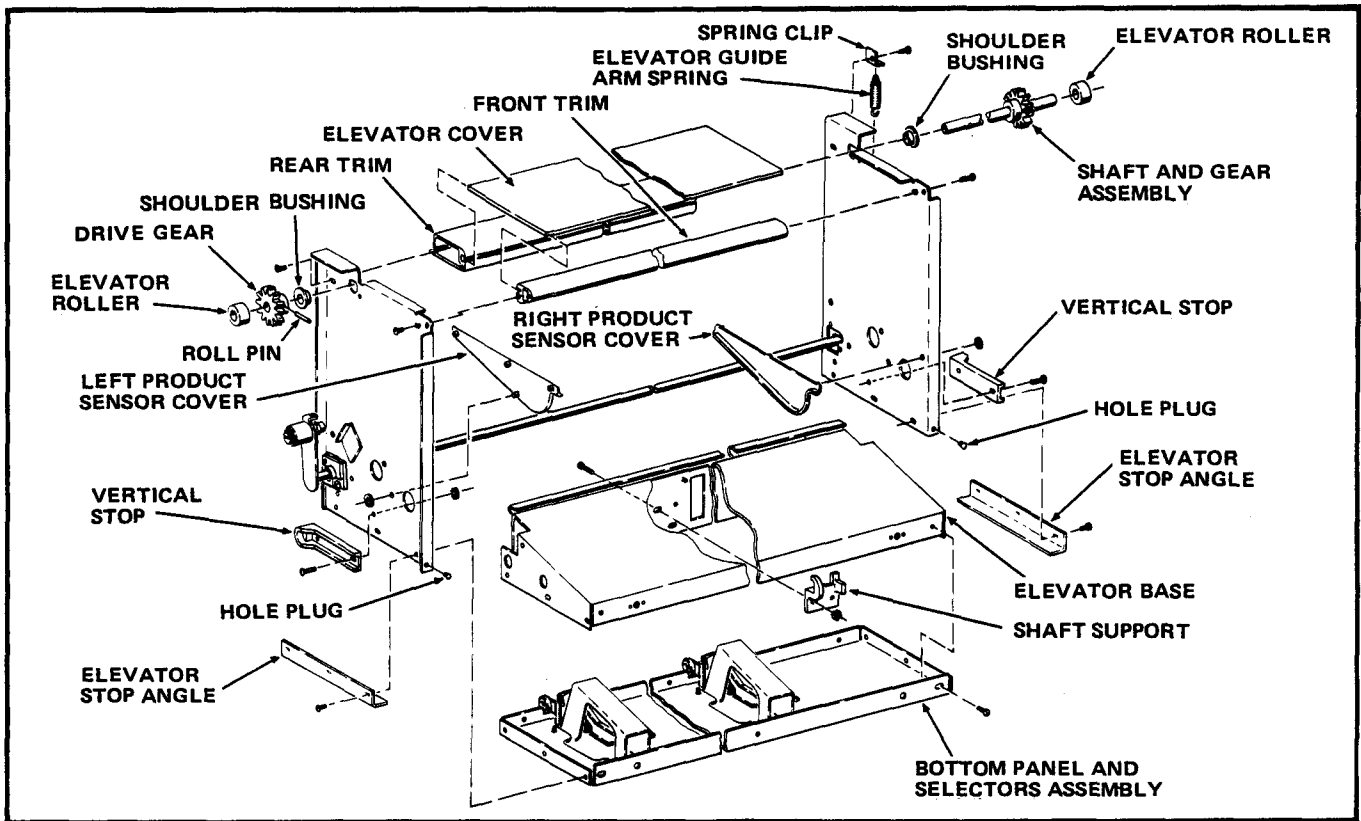


FIGURE 2

16. Remove three attaching Screws and the Rear Trim from the Elevator Sidewalls. See Figure 2.
17. Remove the two plastic Hole Plugs from the holes in the lower front of the Elevator Sidewalls. See Figure 2.

NOTE

When performing Steps B-4 and B-5, make sure that the two Arm and Roller Assemblies are positioned so that the Stud of each Arm and Roller Assembly contacts the Stop Bracket on the Elevator Sidewall when the Arm and Roller Assembly is rotated toward the rear of the Elevator Sidewall.

B. INSTALLATION OF THE KIT

1. Attach the Elevator Base to the Left and Right Elevator Sidewalls included in the kit, part numbers 424-6159 and 424-6157, using the two Screws removed in Step A-12. See Figure 3.
2. Insert the two Shoulder Bushings included in the kit, part number 404-7012, in the lower bushing cut-outs of the Elevator Sidewalls as shown in Figure 3.
3. Using a 1/8" Pin Punch, attach the Right Arm and Roller Assembly, part number 424-6155, to the Elevator Guide Shaft, part number 424-6160, with one Roll Pin, part number 312-7034. All parts are included in the kit. See Figure 3.
4. Insert the Elevator Guide Shaft through the two Shoulder Bushings which were installed in the Elevator Sidewalls in Step B-2. See Figure 3.
5. Attach the Left Arm and Roller Assembly, part number 424-6152, to the Elevator Guide Shaft with one of the Roll Pins, part number 312-7034. Both parts included in kit. See Figure 3.
6. Reassemble the Elevator Assembly by reversing Steps A-17 through A-13 and A-11 through A-1. Use the eight Push-On Retainers included in the kit, part number 5201-266, to attach the Left and Right Product Sensor Covers. Use the remaining Roll Pin included in the kit, part number 312-7034, to attach the left Drive Gear to the Elevator Shaft.
7. Install the Elevator Assembly in the Merchandiser and thoroughly test vend the Merchandiser to check for proper operation of the Elevator Assembly.

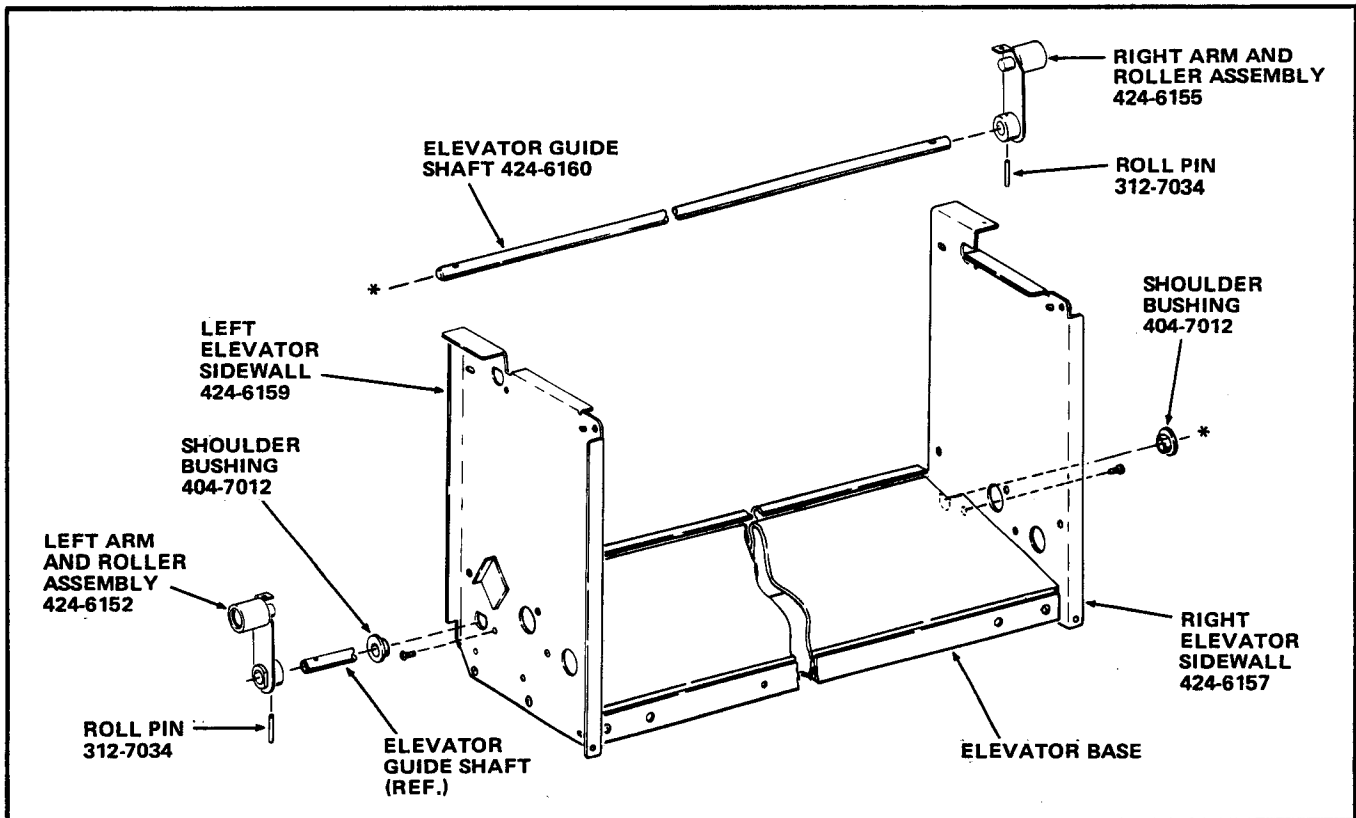


FIGURE 3

**INSTRUCTIONS FOR INSTALLING A ELEVATOR ARM AND SHAFT REPLACEMENT KIT IN A
NATIONAL VENDORS[®], CROWN SEVENTY TWO[®] GG-424 GRAND GOURMET
FOOD MERCHANDISER**

CHECK THE PARTS RECEIVED IN THE KIT WITH THE PARTS LIST IN THESE INSTRUCTIONS. FIGURE 1 SHOWS ALL THE PARTS IN THE KIT. IF ANY PARTS ARE MISSING, CONTACT NATIONAL VENDORS' PARTS DEPARTMENT IMMEDIATELY.

These instructions cover the procedure for installing a Elevator Arm and Shaft Replacement kit in a GG-424 Grand Gourmet Food Merchandiser.

Read these instructions carefully and thoroughly before installing the kit. Retain these instructions for part number and installation information.

Arm and Shaft Replacement Kit, part number 424-6162 contains the following parts:

Part Number	Description	Quantity
424-6160	Elevator Guide Shaft	1
424-6152	Left Arm and Roller Assembly	1
424-6155	Right Arm and Roller Assembly	1
424-6159	Left Elevator Sidewall	1
424-6157	Right Elevator Sidewall	1
404-7012	Shoulder Bushing	2
312-7034	Roll Pin	3
5201-266	Push-On Retainer	8
9900-046	No.8-32 x 1/4 RHS S/T Screw	4
424-6161	Installation Instructions	1
	* * *	

TO INSTALL THE KIT

NOTE

Installation of this kit requires almost complete disassembly of the Elevator Assembly. Be sure to retain all removed attaching parts. Four extra Screws, part number 9900-046, are included in the kit to replace any Screws lost during installation of the kit.

A. PARTS REMOVAL

1. With the Elevator Assembly removed from the Merchandiser, remove three attaching Thumbscrews and the Elevator Tray.
2. Remove the two Elevator Rollers from the Elevator Shaft. See Figure 2.
3. Using a 1/8" Pin Punch, remove the Roll Pin attaching the left Drive Gear to the Elevator Shaft. See Figure 2.

NOTE

When removing the Elevator Shaft and Gear Assembly as described in Step 4, a length of clear plastic tubing may come out with the Shaft. If so, be sure to reinstall the tubing when the Shaft and Gear Assembly is reinstalled.

4. Pull the Elevator Shaft and Gear Assembly out of the Elevator Assembly. See Figure 2.
5. Remove the two Shoulder Bushings from the Left and Right Elevator Sidewalls. See Figure 2.
6. Disconnect the Elevator Guide Arm Spring from the Spring Clip and the Right Elevator Guide Arm and remove from the Elevator Assembly. See Figure 2.

NOTE

Early production Elevator Assemblies are not equipped with the Elevator Stop Angles referred to in Step 7. In this case, simply remove the six Screws referred to in Step 7.

7. Remove six attaching Screws and the two Elevator Stop Angles from the Left and Right Elevator Sidewalls. See Figure 2.
8. Remove thirteen attaching Screws and the Bottom Panel and Selectors Assembly from the Elevator Assembly. See Figure 2.
9. Remove two attaching Screws and Nuts and the Shaft Support from the Elevator Base. See Figure 2.
10. Remove four attaching Screw and Nuts and the two Vertical Stops from the Left and Right Elevator Sidewalls. See Figure 2.
11. Remove eight Push-on Retainers and the Left and Right Product Sensor Covers from the Elevator Sidewalls. See Figure 2.
12. Remove two Screws attaching the Elevator Base to the Elevator Sidewalls and pull the Base free of the Arm and Shaft Assembly. See Figure 2.
13. Remove four attaching Screws and the Front Trim from the Elevator Sidewalls. See Figure 2.
14. Remove the Elevator Cover. See Figure 2.
15. Remove one attaching Screw and the Spring Clip from the Right Elevator Sidewall. See Figure 2.

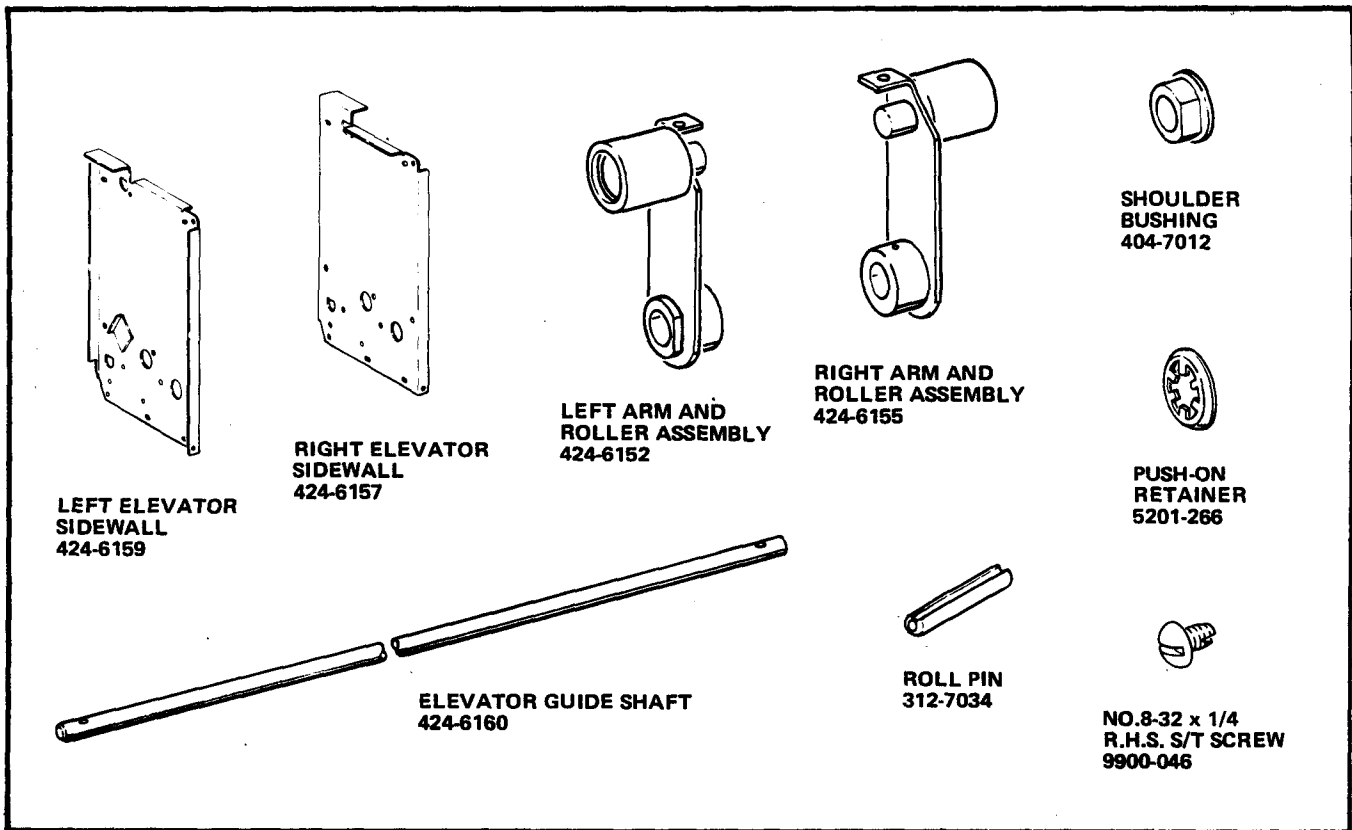


FIGURE 1

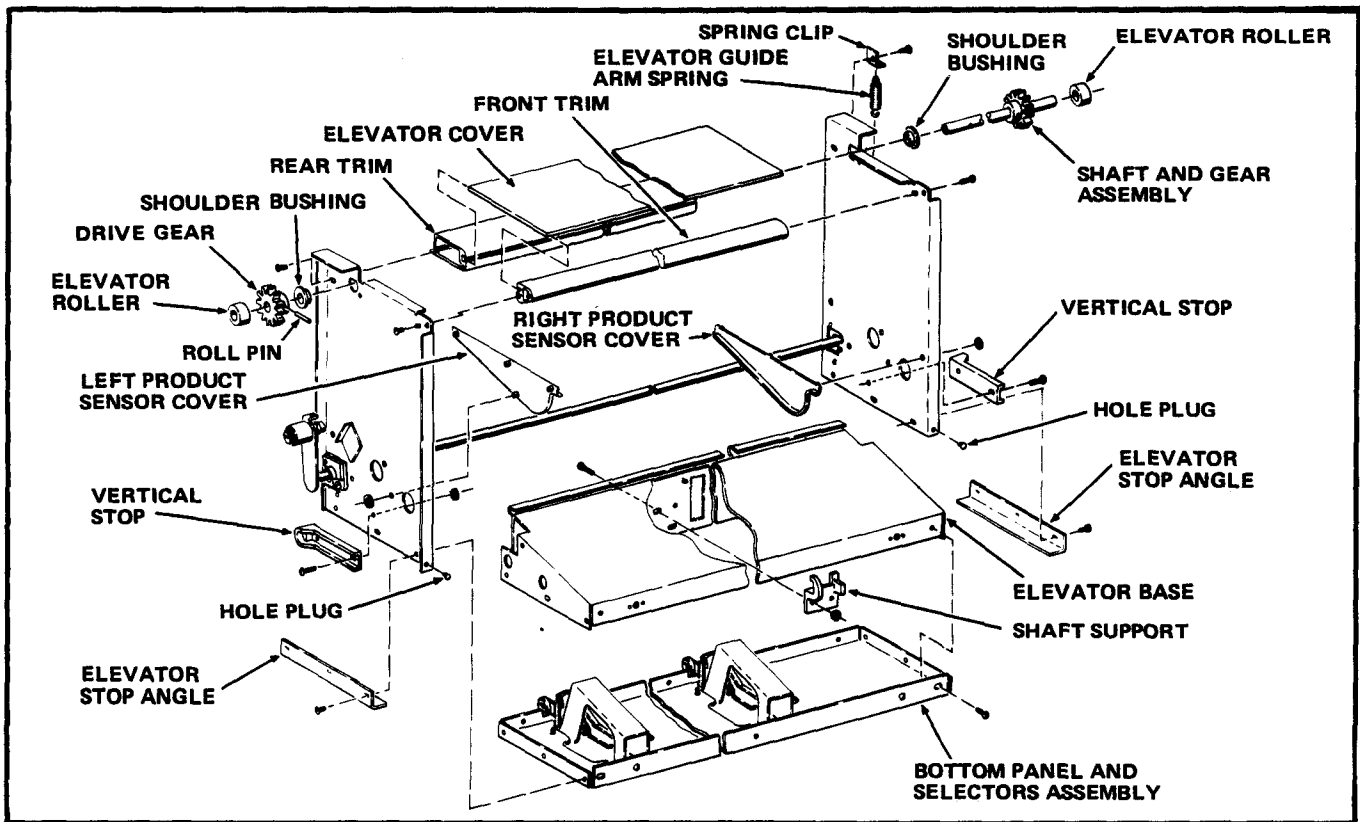


FIGURE 2

16. Remove three attaching Screws and the Rear Trim from the Elevator Sidewalls. See Figure 2.
17. Remove the two plastic Hole Plugs from the holes in the lower front of the Elevator Sidewalls. See Figure 2.

NOTE

When performing Steps B-4 and B-5, make sure that the two Arm and Roller Assemblies are positioned so that the Stud of each Arm and Roller Assembly contacts the Stop Bracket on the Elevator Sidewall when the Arm and Roller Assembly is rotated toward the rear of the Elevator Sidewall.

B. INSTALLATION OF THE KIT

1. Attach the Elevator Base to the Left and Right Elevator Sidewalls included in the kit, part numbers 424-6159 and 424-6157, using the two Screws removed in Step A-12. See Figure 3.
2. Insert the two Shoulder Bushings included in the kit, part number 404-7012, in the lower bushing cut-outs of the Elevator Sidewalls as shown in Figure 3.
3. Using a 1/8" Pin Punch, attach the Right Arm and Roller Assembly, part number 424-6155, to the Elevator Guide Shaft, part number 424-6160, with one Roll Pin, part number 312-7034. All parts are included in the kit. See Figure 3.
4. Insert the Elevator Guide Shaft through the two Shoulder Bushings which were installed in the Elevator Sidewalls in Step B-2. See Figure 3.
5. Attach the Left Arm and Roller Assembly, part number 424-6152, to the Elevator Guide Shaft with one of the Roll Pins, part number 312-7034. Both parts included in kit. See Figure 3.
6. Reassemble the Elevator Assembly by reversing Steps A-17 through A-13 and A-11 through A-1. Use the eight Push-On Retainers included in the kit, part number 5201-266, to attach the Left and Right Product Sensor Covers. Use the remaining Roll Pin included in the kit, part number 312-7034, to attach the left Drive Gear to the Elevator Shaft.
7. Install the Elevator Assembly in the Merchandiser and thoroughly test vend the Merchandiser to check for proper operation of the Elevator Assembly.

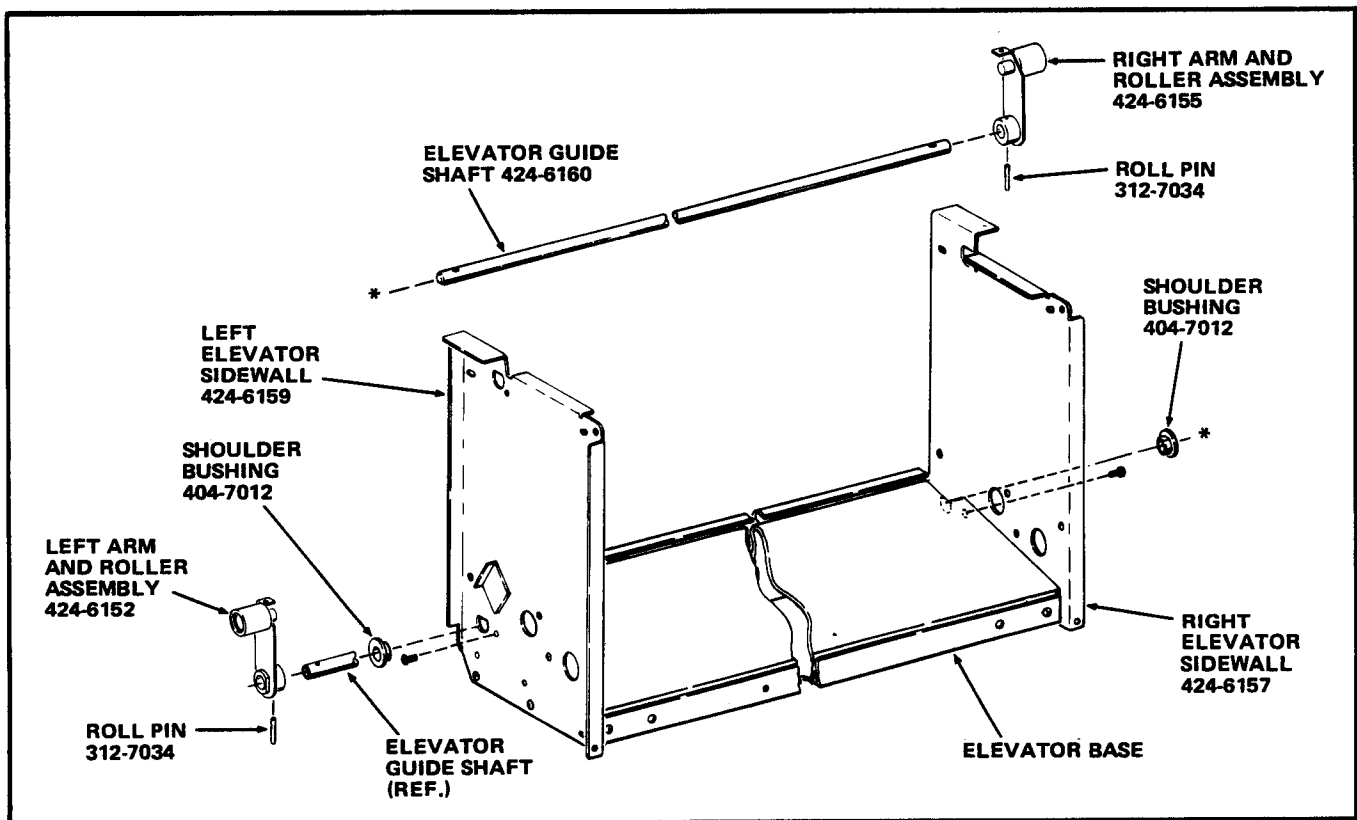


FIGURE 3